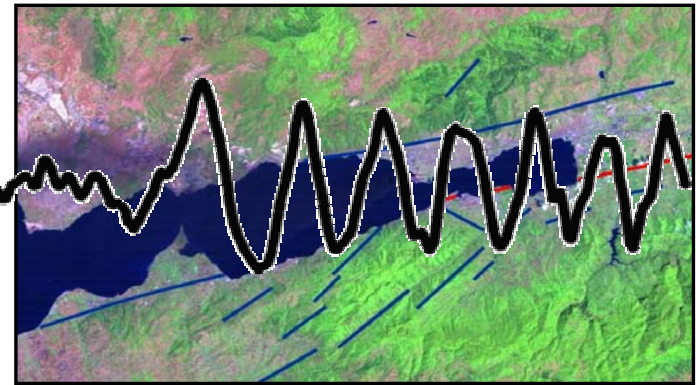
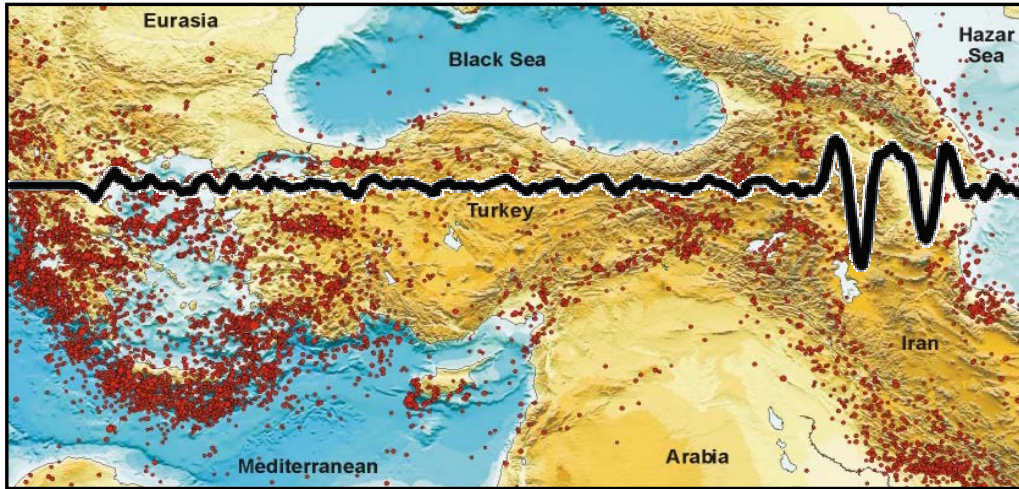




Koç University * Science & Math Seminar

Active Faulting and Continental Deformation in the Eastern Mediterranean Region: Recent Destructive Earthquakes of Turkey



$$u(t) = \Omega(t) * g(t) * I(t)$$

$$u(t) = \sum_{k=1}^{N_{\Delta\tau}} \omega_k T_{\Delta\tau}(t - \tau_k) * C^R(t) * G * A(t, t^*) * \delta(t - t_m) * g^S(t) * I(t)$$

$$\Omega(t) = \sum_{k=1}^{N_{\Delta\tau}} \omega_k T_{\Delta\tau}(t - \tau_k)$$

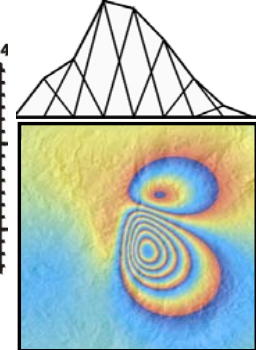
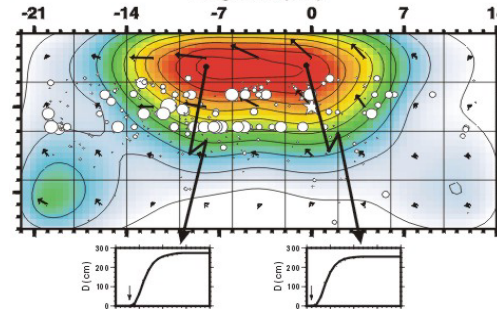


Prof. Dr. Tuncay Taymaz
Araş. Gör. Dr. Onur Tan
Araş. Gör. Seda Yolsal



Istanbul Technical University, the Faculty of Mines
Department of Geophysics, Seismology Section
Maslak-İstanbul

<http://www.geop.itu.edu.tr/~taymaz>



Thursday 17 March 2005 at 16:45 (Tea & Cookies at 16:30), SCI-Z42